



maars LIVING WALLS®



Horizon

the new design in single
glazed walls

Horizon

Ultimate combination of style, accessibility and privacy

Horizon is more than just an elegant glass partition; it is also an economical solution for your working environment.

The minimal profile height and seamless connection with other Maars solutions, create a high-quality transparent aesthetic. The uniform profile height, frames and wall joints are creating slim and continuous lines. In other words: a minimalist design with a high-quality finish. Moreover, the large variety of doors gives form and character to accessibility. Just like the other Maars Walls, Horizon is demountable and quick to install, resulting in a flexible and sustainable system. Horizon literally and metaphorically broadens your horizons...

horizon



unique single glazed design



“Allowing the interior to
express the open-ended
nature and transparency.”



Unique profile properties

The low profile height and seamless connection with the other Maars partitions mean you get the desired result in any surroundings.

By applying several profile heights, this glass wall can also be used for floors with large tolerances.

- The profile height is 22 mm / $\frac{7}{8}$ ", smaller than a €1 coin
- 35 mm / $1\frac{3}{8}$ " is an option; combinations possible:
 - 22 mm / $\frac{7}{8}$ " + 22 mm / $\frac{7}{8}$ " profile: +/- 4 mm / $\frac{3}{16}$ "
 - 22 mm / $\frac{7}{8}$ " + 35 mm / $1\frac{3}{8}$ " profile: +/- 11 mm / $\frac{7}{16}$ "
 - 35 mm / $1\frac{3}{8}$ " + 35 mm / $1\frac{3}{8}$ " profile: +/- 18 mm / $\frac{11}{16}$ "
- 1 universal profile for several glass thicknesses
- Simple and fast assembly using 2 profiles



Acoustical sliding door

Acoustical sliding door

- All sides of the door are sealed
- Drop seal on bottom providing additional sound insulation
- Sound insulation up to 35 dB, an improvement of 15 dB compared to normal sliding doors
- Sound performance is third party certified



Customised accessibility

Customised accessibility

The slim door frame and the large variety of doors leads to suitable solutions for any interior setting.

- Swing and sliding doors
 - Single or double swing
 - Sliding doors, optionally fitted with the 'soft close' mechanism
 - Glass doors
 - Solid steel or wooden doors
 - Combination doors: glazed/solid
- Choice of wall-high door frames or door frames with continuous glazing



Passageway

transparency in design



Framed glass door



Glass door



Wooden door



Steel door



Sliding door

Compatibility between **aesthetics and functionality** is achieved by **minimalist design** alone. Visual simplicity allows the single Horizon glass walls to really show their status as a **top-quality product**.



Customised working environment

The various profile finishings and colours, door systems and glass systems, including sand blasting and screening, ensure customised privacy and transparency.

Dimensions and acoustics

- Maximum module width: 1200 mm / 3' - 11 1/4"
Non-standard dimensions and weights available on request
- Weighted sound insulation index complies with EN ISO 717-1
- R_w = up to 39dB / STC = up to 39dB



Seamless connection with other Maars Living Walls

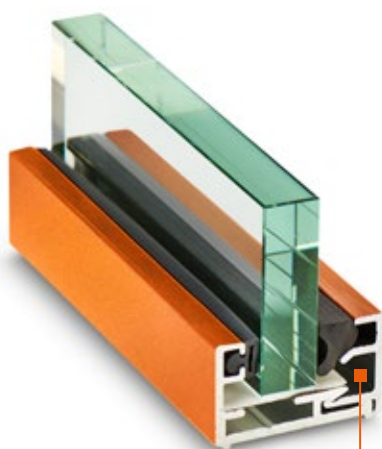
Glass properties

Maximum stability through large varieties of glass thicknesses.

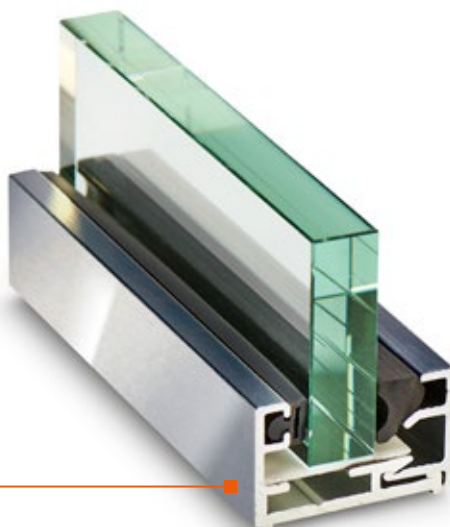
- Several glass thicknesses possible: 10 mm / 3/8", 12 mm / 1/2" and 16 mm / 5/8"
- Various finishings: sandblasting, foil and coatings



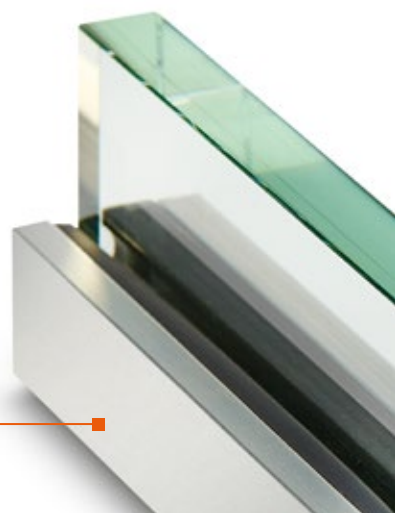
Perfect fit with other steel walls and doors



Profile finishing in several colours



Brushed and/or anodised aluminum



Polished aluminum finishing

Newtonweg 1, PO Box 1000
3840 BA Harderwijk
The Netherlands

T +31 (0)341 46 52 11
info@maars.nl
www.maarslivingwalls.com

Unleash creativity with Carré

An industrial design for your interior, easily created with Carré. Suitable for all thicknesses in single glazed walls.

- Unlimited design freedom and segmentation
- Vertical and horizontal muntins
- Available in numerous finishes
- Industrial elegance
- C-profile



Follow us online

